

**24 inch Dishwasher Standard Tub Panel Ready, 15
place settings, 42 dB, 6 wash cycles**
Heritage Series

\$ 949



DW24S3IPV

This stainless steel standard tub panel ready dishwasher offers superb cleaning performance with 3 spray arms to remove tough deposits. Loads up to 15 place settings and it is equipped with 3 racks: a cutlery tray, a convenient height-adjustable loaded on 2 levels middle rack and a folding tines lower rack. Select one of the 6 available wash cycles and 7 wash options through the concealed multi-button interface. This dishwasher is perfectly insulated and virtually inaudible at 42 dB(A) with optional Stealth mode.

All Bertazzoni dishwashers are designed and engineered with the highest grade materials and components. Using one of the 3 available handle kits in Professional, Master and Heritage Series style, this panel ready dishwasher integrates seamlessly in your kitchen and perfectly coordinates with all other Bertazzoni appliances into style-harmonized suites for a true, high-performing kitchen.

This dishwasher is Energy Star rated. Certified by the National Sanitation Foundation for eliminating 99.99 percent of most common household bacteria.

[Guarda online](#)

Specifications

Features

General features

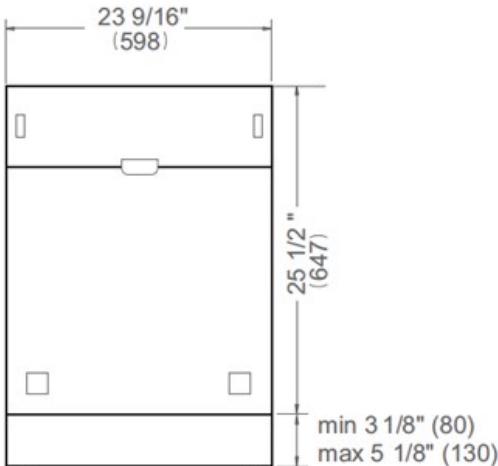
| | |
|----------------------------|--|
| Size | 24 in |
| Place setting | 15 |
| Controls | concealed multi-button |
| Interior finish | stainless steel |
| User interface | LED display |
| Spray arms | 3 |
| Number of racks | 3 |
| Cutlery basket | sliding |
| Wash cycle | 6 - auto, crystal and china, pots and pans, quick, regular, rinse and hold |
| Wash Options | 7 - accel, extra dry, delay start, 3 half load modes, sanitize, scrub, stealth |
| Delayed start | yes |
| Lighting | floor projection status light |
| Drying system | PowerDry Plus |
| Overflow protection device | yes |
| Filter system | triple stage metal filter |
| Certification | ADA Compliant, CEC, NSF, UL |

Technical specifications

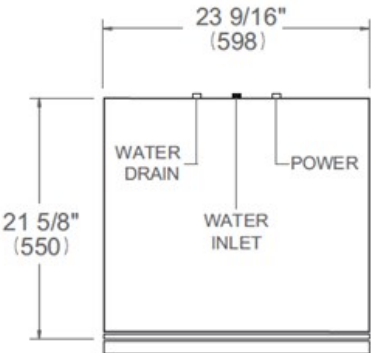
| | |
|--------------------|----------------------|
| Electrical supply | 120 V - 60 Hz - 12 A |
| Power rating | 1400 W |
| Energy consumption | 234 kWh |

Dimensions

FRONT VIEW



TOP VIEW



Drain hose and toe kick are provided with the unit